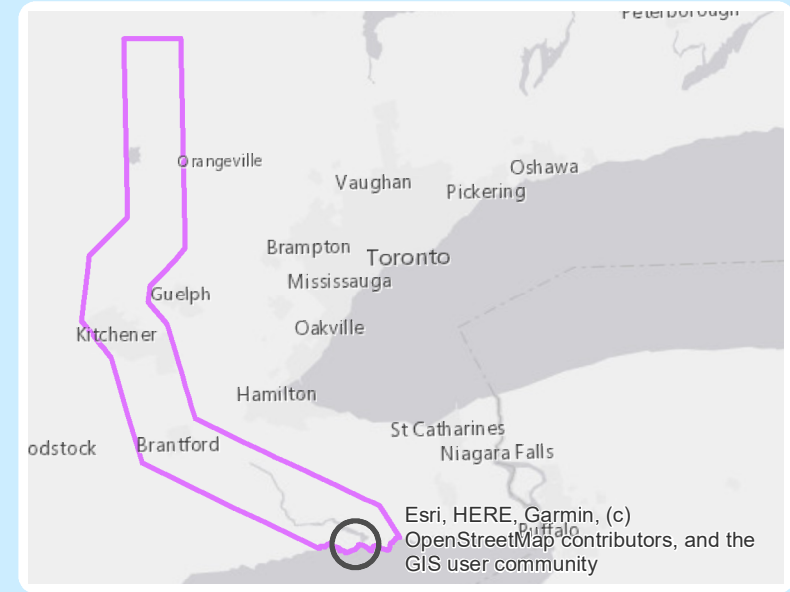
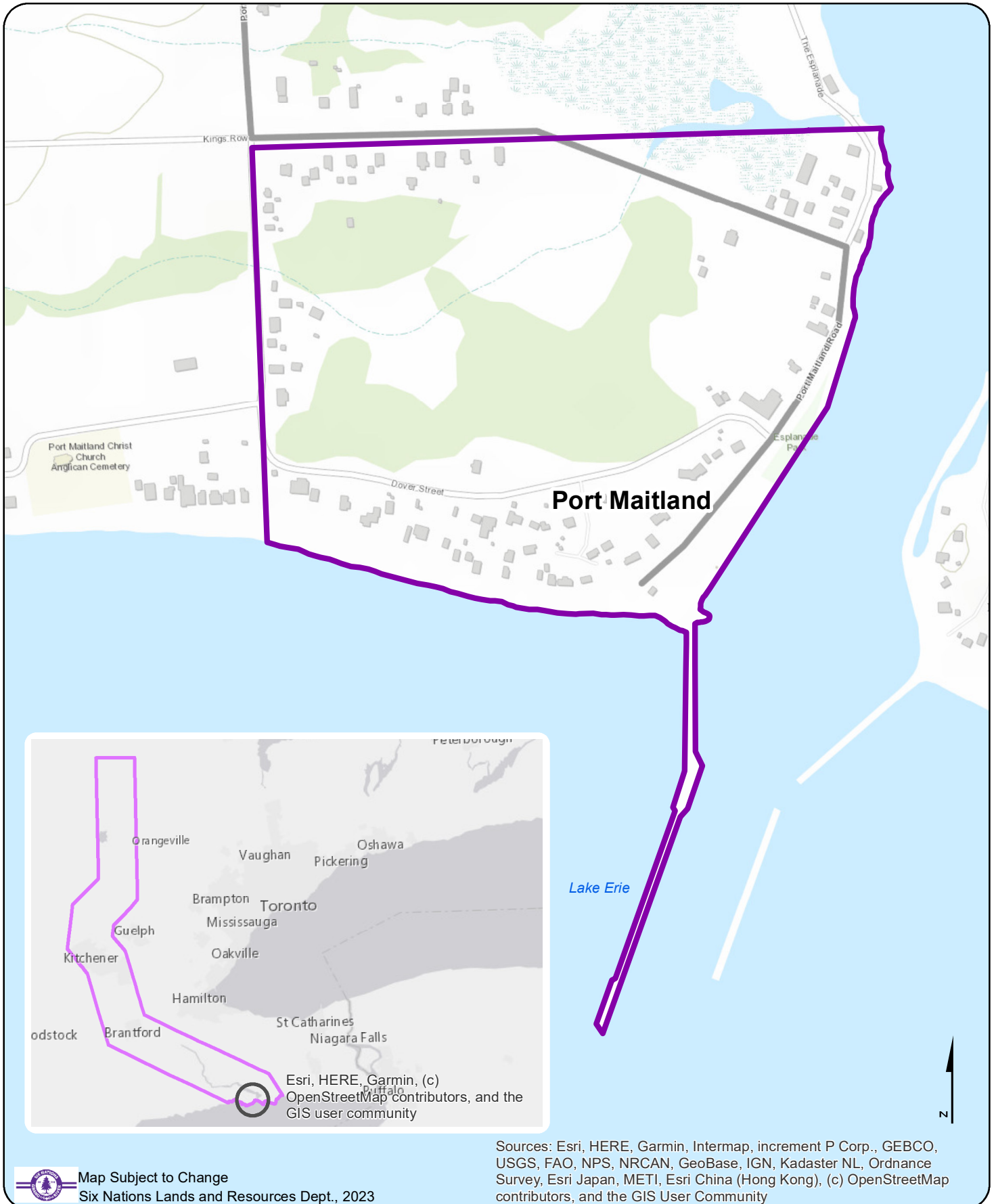


10. Ordnance Reserve - Lots 25 & 26, Con. 4, Port Maitland, Dunn Township, 75 acres (approx.)

Filed: July 21, 1989



Esri, HERE, Garmin, (c) OpenStreetMap contributors, and the GIS user community



Map Subject to Change
Six Nations Lands and Resources Dept., 2023

Sources: Esri, HERE, Garmin, Intermap, increment P Corp., GEBCO, USGS, FAO, NPS, NRCAN, GeoBase, IGN, Kadaster NL, Ordnance Survey, Esri Japan, METI, Esri China (Hong Kong), (c) OpenStreetMap contributors, and the GIS User Community